

Ephesians 6:10-17



Fight Cancer with God Challenge

A Tutorial For Those Who Give and Receive Coins

www.fightcancerwithgod.org

About the Fight Cancer with God Challenge

Front of Coin:

The largest ribbon is pink and light blue, representing breast and prostate cancer, and the two lavender ribbons represent all cancers.

Each ribbon has a sword that symbolizes the Word of God, drawing inspiration from the Bible. The Word of God is a source of comfort, strength, and inspiration for those going through struggles.

The following verses remind us of God's presence, strength, comfort, grace, and nearness during times of trial and suffering, offering hope and assurance to those going through challenging times.

- Isaiah 41:10 - So do not fear, for I am with you; do not be dismayed, for I am your God. I will strengthen you and help you; I will uphold you with my righteous right hand.
- Psalm 23:4 - Even though I walk through the darkest valley, I will fear no evil, for you are with me; your rod and your staff, they comfort me.
- Philippians 4:13 - I can do all this through him who gives me strength.



Cancer awareness ribbons are a powerful symbol in the fight against cancer. Each color represents a different type of cancer, serving as a visual reminder of the struggles faced by those affected by the disease and the importance of supporting cancer research and awareness.

Back of Coin:

The coin can be used to remind people to be aware that even though they are in daily battles with cancer, God has made provision to comfort and give them strength - Ephesians 6: 7-11, put on the Whole Armor of God. Each piece of armor represents a piece of protection that we use during our struggles.



Belt of Truth: The truth about cancer is acknowledged, and the awareness of condition and treatment options. Be fully committed to truthfully face the challenges posed by the disease.



Breastplate of Righteousness: The breastplate signifies protection and righteousness. In the context of cancer, the Breastplate of Righteousness armor can also symbolize upholding your values and principles and maintaining your integrity throughout your journey.



Shoes of the Gospel of Peace: The Shoes of the Gospel of Peace can represent a message of internal peace and hope amid the struggles and uncertainties that come with a cancer diagnosis. Cultivate a sense of calmness and trust in God's plan.



Shield of Faith: Faith in God's strength and healing power can be represented by the Shield of Faith and serves as a symbol of trust in treatment prayer and the resilience and courage of the individual facing cancer. Know that you are not alone in your battle with cancer.



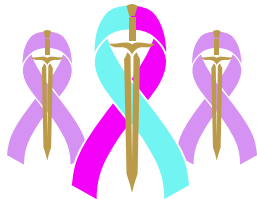
Helmet of Salvation: The helmet signifies protection and salvation. It's a symbol of the hope for healing, comfort from the challenges posed by cancer and one's eternal salvation.



Sword of the Spirit: Represents the power of God's Word and Spirit to provide strength, comfort, and guidance to those affected by cancer, encouraging them to stand firm in their faith and determination. To read and learn the scriptures and use the Word to fight back, bolster resistance.

Three Swords:

The **three swords** are a reminder of calvary's three crosses, symbolizing God's grace, redemption, salvation, and hope. Additionally, the three swords represent the Father, Son, and Holy Spirit, each offering attributes that can support someone who is fighting cancer. The attributes in the context of someone's battle against cancer can be understood as follows:



- **The Father:** Symbolizing God's strength, protection, and provision. The Father offers comfort, stability, and a sense of security to those facing the challenges of cancer. Believers find strength in knowing that they are under the care and guidance of a loving and powerful God.
 - Psalm 18:2 - The Lord is my rock, my fortress and my deliverer; my God is my rock, in whom I take refuge, my shield and the horn of my salvation, my stronghold.
- **The Son:** Representing God's healing, compassion, and sacrifice. The Son, Jesus Christ, is seen as a source of healing and restoration. His sacrifice on the cross is a symbol of hope and the ultimate act of love, providing comfort and peace to those grappling with the effects of cancer.
 - Matthew 11:28 - Come to me, all you who are weary and burdened, and I will give you rest.
- **The Holy Spirit:** Signifying God's presence, guidance, and comfort. The Holy Spirit is a source of wisdom, comfort, and encouragement in times of trial. The Holy Spirit is seen as the divine helper who can bring peace, strength, and understanding to individuals facing the physical and emotional struggles of cancer.
 - John 14:26 - But the Advocate, the Holy Spirit, whom the Father will send in my name, will teach you all things and will remind you of everything I have said to you.

Together, **the attributes of the Father, Son, and Holy Spirit offer spiritual support, comfort, healing, and hope to individuals** navigating the difficult journey of cancer treatment and recovery.

The "Jesus Fish" Symbol - Ichthys

The fish symbol, visible when our coins are turned sideways, serves as a powerful emblem of our Christian identity during our battle with cancer. This ancient symbol, known as the ichthys, consists of two simple curved lines forming a fish-like shape. It carries deep meaning, allowing us to silently proclaim our faith and draw strength from our beliefs as we face the challenges of this disease.



The Greek word for fish, "ichthys," is an acronym representing "Jesus Christ, God's Son, Savior." When we see or use this symbol, we're making a statement of faith, even without words.

A Reminder of Hope: The fish symbol on our coins serves as a constant reminder of the hope we have in Christ. In moments of doubt or fear, a glance at this symbol can reignite our faith and remind us of God's promises.

Unity in Faith: When we see three fish together, it represents the community of believers supporting one another. This reminds us that we're not meant to struggle alone, but to find strength and comfort in fellowship with others during our cancer battle.

Never Alone: The presence of the fish symbol on our coins is a tangible reminder that we're never truly alone in our fight. It represents the constant presence of God and the support of our Christian community throughout our journey.

By carrying our coins and recognizing the fish symbol, we affirm our identity in Christ and draw strength from our faith community. It serves as a powerful reminder that even in the midst of our battle with cancer, we are held in God's love and supported by our fellow believers.

How to Use and Register Coins

Many carry their coin in their pockets or display it daily as a reminder to pray and maintain a relationship with God. Also, many who carry coins and register them on the website pass out coins to those who may be struggling and in need of a relationship with God. The coins act as a bridge for conversation and the ultimate presentation of the gospel.

The hope is for people to commit to taking the challenge! We encourage everyone to check out our website www.fightcancerwithgod.org, which has great resources for those who need encouragement, music to lift spirits and worship, bible verses for guidance, a forum section where people can create postings and interact with others, and a map that shows people from around the world who are taking the challenge.

Registering a coin and reading postings in the forum creates community with others. Those with coins are encouraged to post prayer requests, battles, victories, valuable information to educate and encourage others, and questions. This encourages others to do the same! Create a post to be an example for others.

Registering coins is easy! Our website collects only first names, coin numbers, and zip codes. The map on our website displays registered coin locations, offering a visual representation of our community's reach.

Finally, the coin serves as a tangible representation of God's abiding presence and unwavering love and a reminder that we are never alone in our struggles. His grace is always sufficient for us. May the Fight Cancer with God Challenge Coin be a beacon of light and love, a symbol of faith and hope, and a testament to the enduring grace of God during life's greatest challenges. Carry your coin daily, give coins to others, and remember to pray always!

Take the Challenge Today

Step One: Watch the Inspirational Video: Begin by watching the video about taking up the Armor of God Challenge to understand the power of faith in overcoming our struggles.

Step Two: Read About the Challenge Coins and Bible Passage: Familiarize yourself with the significance of your challenge coin and read the Bible passage that inspires this challenge (Ephesians 6:10-17).

Step Three:

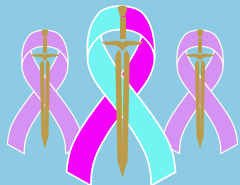
- Carry Your Challenge Coin: Keep your challenge coin with you in your pocket or display it as a reminder of God's strength and presence.
- Say a Daily Prayer: Dedicate time each day to pray for strength, healing, and guidance through your cancer journey.
- Register Your Coin: Sign up and register your coin's unique number for free on our website to connect with a supportive community
- If you're not having a daily Bible devotion time, sign up for Daily Devotionals: Subscribe to Pastor Rick Warren's daily devotional to receive regular encouragement and spiritual insights.
- Share Coins with Others: Obtain additional coins to give to others who are also facing cancer or challenging battles, providing them with hope and encouragement.
- List Your Battle in Our Forum: Share your story and experiences in our online forum to connect with others and find support
- Do something good for another. No matter how bad our situation, we can always pray for others as part of our daily routine. Pray always!

Commonly Used Cancer Ribbon Colors

- **Lavender:** All cancers
- **Pink:** Breast cancer
- **Light Blue:** Prostate cancer
- **Teal/White:** Cervical cancer
- **Orange:** Leukemia
- **Dark Blue:** Colon cancer
- **Gold:** Childhood cancer
- **Purple:** Pancreatic cancer
- **Gray:** Brain cancer
- **Yellow:** Sarcoma/bone cancer
- **Burgundy/Ivory:** Head & neck cancer
- **Green:** Liver cancer
- **Blue/Purple:** Thyroid cancer
- **Black:** Melanoma
- **Periwinkle:** Stomach cancer



*Please note that these colors are commonly used but may vary depending on different organizations and regions.



Take the Fight Cancer with God Challenge today!

Questions? Get in touch with us at info@fightcancerwithgod.org.

SCAN ME!
To view our website

